

Leading construction supplier uses Strategic Reinforcement Design for service yard expansion....

Precon Products in Sheffield is a leading independent supplier of construction products. Faced with increased customer demand, the owners set about planning an extension of their service yard.

The yard is used to store external construction materials and serves as a loading and delivery area for suppliers and customers using trucks and vans. Being such a business-critical asset, it was important for Precon Products to specify a concrete hardstanding that was fast to install to minimise disruption.

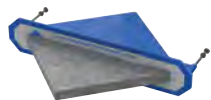


Precon was familiar with the benefits of the Danley Strategic Reinforcement Design™, explains Mike Philpot:

“We’re familiar with the Danley product range via some of our customers, so hear great reviews of the system. As a supplier to the construction industry, we know from experience that finding a solution that combines strength and longevity while also being low maintenance and quick to install is the holy grail! It seemed the ideal solution for our needs.”

Precon enlisted the support of local contractor, D&N Sheffield, to install a 1250 sqm extension to their busy service yard. Being familiar with the Danley concept of removing the central mesh support in favour of tapered dowel plates at the joints, D&N Sheffield planned the work carefully to minimise downtime for the merchant.

1 (1) Danley™ Dowels



(2) Danley PD3 Cradle™

Using Danley’s Strategic Reinforcement Design™, D&N Sheffield cut the installation time of Precon’s busy service yard by one day, while also reducing both the amount of steel and concrete used in the build.

Danley’s Strategic Reinforcement Design™ drastically reduces joint spalling, random cracking and differential deflection of the slab sections, meaning less maintenance and minimal downtime for the service yard going forwards.

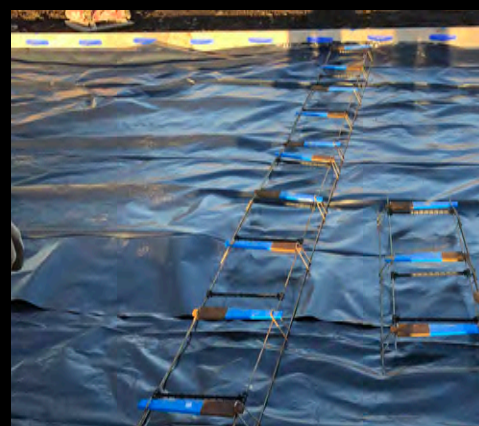
The Strategic Reinforcement™ Design complies with Concrete Society TR66 Rev 1: External in-situ Concrete Paving, ACI 330.2R-17: Guide for the Design and Construction of Concrete Site Paving for Industrial and Trucking Facilities and ACI 360-R-10: Guide to Design of Slabs-on-Ground.

Project information:

- Client: Precon Products
- Project: Sheffield Northern Depot
- Location: Darnall, Sheffield
- Concrete Hardstanding Area: 1250m²
- Concrete Contractor: D&N Sheffield

Danley’s Services:

- Technical design support to the engineer
- On-site installation training and guidance on best practices for quality assurance
- Danley® design warranty



Danley® Strategic Reinforcement™ Design

- 150mm thick PAV2 C32/40 Concrete Slab
- No steel reinforcing mesh
- PD3® Dowel Cradles at contraction joints
- Danley® Dowels at construction joints
- Joints spaced at 3.6m x 3.6m

